

Electrifying Vehicles with Magnet Free, Smart & Connected Drivetrain Platforms



www.volektra.com | Utica Michigan

LEAD INVESTOR



Vikas Choudhary

I believe investing in Volektra is a wise decision that could pay off in numerous ways. Not only does it help reduce CO2 emissions, but it also gives you the opportunity to be part of a mission- and purpose-driven company that is leading the way in climate change solutions. Your investment could be paying off for both the environment and your wallet. From a pure investment perspective, I believe Volektra is an incredibly attractive option. The team, business model, market, and technology all combine to form a comprehensive solution that could bring great returns. I am particularly impressed by the unified mission and purpose of Volektra, and their commitment to achieving commercial success while also making a real impact. So join the fight against climate change by investing in Volektra today.

Invested \$25,000 this round

Highlights

- 1 Mission Oriented Company with \$2.5 Million Total Revenue in 3 years & saving 30 Metric Tons Co2/Year
- 2 Order book forecast of min \$5M for 2023 (not guaranteed) with cash confirmed orders of \$1M
- 3 Patent pending technology for breakthrough magnet less motor and wireless cadence sensor
- 4 Mission 2050- Save 4 Giga tons of CO2 and 2 Giga tons of Toxic waste (due to rare earth elements)
- 5 Top notch team of Ex VW/FORD/ABB/SAMSUNG/ANALOG DEVICES folks who left jobs to change status quo
- 6 Rare mix of Hardware/Software and Mechanical Engineers with MBAs from Kelloggs (US) & WHU (Germany)
- 7 Proven Execution Record - Bootstrapped the company to million dollar yearly revenue
- 8 Global Presence - Present in US/Germany/Poland and India - Ready to Scale

Our Team



Manish Seth Founder and CEO

2 decades of Global Experience, led multimillion dollar development projects. Grew Volektra to 1 million dollar yearly revenue, setting up operations in 3 countries and saving 30,000 kg of CO2 every year. Built up strong team that will disrupt mobility.

Our sales show that people need what we are making. We have strong demand and interests from many companies in either buying our product or collaborating to scale up. I have 18 years of experience in Automotive Drivetrain and in 2019 while working on a joint project of two global Automotive OEMs, I found that in addition to battery the major problem in building electric vehicles is the unavailability of right drivetrain. This is more evident in case of vehicles that fall between a bike and a car such as e-bike, tuk tuk and small 1 ton trucks. Hence, I started the company to provide the most advanced drivetrains and conversion platforms for these vehicles globally. After Covid, the phenomenon of affordable smaller electric vehicles is spreading fast across the globe and this gives us the huge opportunity.



Luis Pont Drivetrain Design Director

Worked at ABB advanced motor labs on multiple new generation motors. Highly knowledgeable on electromagnetic and electrical engineering. Invented magnet-less motor that is cheaper and better than magnet based motors.



Shom Shekhar VP - Software Development

2 decades of software experience. Built & sold query analyser software to DBS bank of Singapore. Developed AI based OS hardening system for cloud infra, Developed IOT platform for Samsung that is used in BMW, FCA and AUDI. Training next Gen of engineers.



Aleksey Skuratov Head of Embedded Systems Design

Developed Radar Systems for aerospace and Defense. Developed device for analysing Gas composition for chemical plants. Developed and produced wireless e bike hardware system.



Marek Hric CFO

Founded a Blockchain based company to tokenise real estate. More than a decade of experience in Finance and investment from 2 of top European banks

Pitch



Silent killers Eating the Earth What Will Next Gen Get



POLLUTION

7 Million Deaths per Year caused by pollution due to burning of Fossil Fuels



PLANET

5 Million Deaths per Year attributed to Global Warming



POVERTY

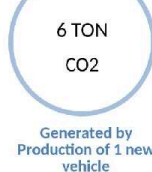
22,000 Children Die Every Day due to Poverty

© iStockphoto.com/Andreas Wolf
© iStockphoto.com/Andreas Wolf
© iStockphoto.com/Andreas Wolf

See slide 27 for legal disclaimer



The World 'Moves' in a Dangerous way



WRI, Greenhouse Gas Emissions from Transport, 2014

WRI, Greenhouse Gas Emissions from Transport, 2014

WRI, Greenhouse Gas Emissions from Transport, 2014



There is an Urgent need to shift from

Cars to Smaller Electric Vehicles



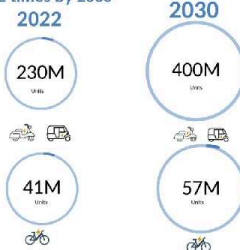
A growing number of workers will gravitate toward smaller, more environmentally friendly forms of transport as pandemic restrictions lift and offices reopen
McKinsey Center for Future Mobility, 2021

To limit warming to 2 degree or less, more than 400 Million 2 and 3 wheelers need to be electrically powered by 2030
Paris Declaration on Electro-Mobility, COP21

© 2021 Volektra Inc. All rights reserved.

2

Demand for Smaller Electric vehicles will be 2 times by 2030



Paris Declaration on Electro-Mobility and Climate Change A Call to Action Electric Vehicle Action Agenda

Transport contributes almost one quarter (23 percent) of the current global energy-related greenhouse gas (GHG) emissions and is projected to increase by 50 percent by 2050. It is also the fastest growing source of GHG emissions, with a projected increase of 100 percent by 2050.

Limiting the global temperature increase to below 2 degrees Celsius requires changing this transport emissions trajectory, which, due to the slow pace of the transport sector's decarbonization, requires a rapid transition to electric vehicles (EVs) and other zero-emission vehicles.

According to the International Energy Agency, the world has not met the goal of a 50 percent reduction in global transport emissions by 2050. It is also the fastest growing source of GHG emissions, with a projected increase of 100 percent by 2050.

To achieve the goal of a 50 percent reduction in global transport emissions by 2050, the world must transition to electric vehicles (EVs) and other zero-emission vehicles. This requires a rapid transition to electric vehicles (EVs) and other zero-emission vehicles.

With varying incentives, regulations, and investments, we estimate we can reach 50 percent of the goal by 2030. However, we estimate we can reach 100 percent of the goal by 2050.

© 2021 Volektra Inc. All rights reserved.



But That Leads to Another Catastrophic Problem



Supported by



Democratising Sustainable Mobility



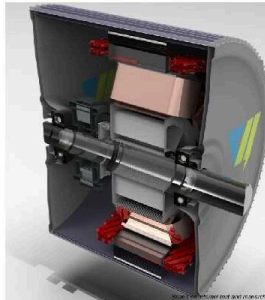
Fewer Cars, More Freedom, Cleaner Planet

© 2022 VOLEKTRA. ALL RIGHTS RESERVED. FOR INFORMATION PURPOSES ONLY.

World's First Magnet Free Motor that outperforms Magnet Based Motors

Synchronous - Externally Excited Machine - SEEM

- Patent Pending (US/India)
- Reduces Reliance on Rare Earth Minerals
- Helps Solve Supply Chain Issues
- Reduces Upfront Cost of Drivetrain
- Improves Efficiency and Reduces CO2 emission
- Highly Versatile and Modular
- Both Mid drive and In Wheel Configurations Possible



Dragon (Magnet Free) vs Other EV Motors

Most Power Dense Motor In Market



Parameter	Volektra Dragon	Magnet Based - Mid Mount	Magnet Based - In Wheel	Swi Rb4	AC Induction Motor
Magnet Free	✓	✗	✗	✓	✓
Relative cost as compared to Magnet based In wheel motor	75.00%	90.0%	100.0%	80.0%	60.0%
Power per Kg (kW/Kg)	2.01	1.9	1.7	1.4	1.8
Power Density (kW/L)	20.00	17.0	9.0	7.0	15.0
WPT Efficiency	89%	less than 80%	88.00%	87.00%	86.00%
Seamless Operation in full range	✓	✗	✗	✗	✗
Real Time Temperature Measurement	✓	✗	✗	✗	✗

Based on literature and research

World's First Smart Wireless E Bike Kit with Magnet Less Sensor

Smart and Connected

- Patent Pending
- Reduces Reliance on Rare Earth Minerals
- Promotes Circular Economy
- Converts any Bike into Electric in 15 min
- Converts CO2 saved into Carbon Credits
- Reduces upfront cost of going Electric
- B2C and B2B Sales model possible



Volektra E bike Kit vs others

2 Times Better than others at Same price point



	Volektra	EU & US Competition	Chinese Competition
Price	EUR 600 for 300km Range (Excludes bike to which is connected)	EUR 900 (Pre Paid) for 300km range	EUR 400-450 for 35 km range
Ease of Installation	✓	Multiple wire connections	Multiple wire connections
Connected Smart App	✓	✗	✗
Over Air Updates	✓	✗	✗
RTT performance	✓	✗	✗
Range	up to 300km	up to 30 km	up to 35 km
Mounting flexibility	Front, Rear or In wheel	Only on handle bar	Frame
Interlocking of frame/other devices	✓	✗	✗
Real Time monitoring and battery inspection	✓	✗	✗
Control System	Real Time (Rider Oriented Control)	Swi Wheel Control	Swi Opposite control
Weight	7kg	2kg	>8kg
Auxiliary	Dual lock for battery and kit	None	Other
Assembly location	Europe	Other	Other

Based on literature and research

Volektra Kit vs E bikes

User Metric	Volektra	Comparison - Europe	Comparison - US
Price	EUR 600 for 300km Range	EUR 2500 (Pre Paid) for 400km range	EUR 2800 for 20km range
Choice of Bikes	Wider	Limited	Limited
Switching cost of bike	LOW (kit can be used on multiple bikes)	High	High
CO2 footprint	Lower	Higher	Higher
Circular Economy	✓	✗	✗

We are Present in all Key Regions - Ready to Scale



90+ years of combined experience in Automotive/Electronics and Software

<p>MANUEL BERTH Founder & CEO 30 years of experience in EV powertrains</p>	<p>ANDREAS HERR CEO 20 years of experience in EV powertrains and power electronics</p>	<p>SCM SIEGEMANN VP - Software Development 15+ years of experience in software development</p>	<p>ALEXANDER KUBITZKY Chief Developer - Embedded System 10+ years of experience in embedded system development</p>
<p>URS PONT Head of Design - Powertrain and Controls 15 years of experience in powertrain design</p>	<p>GAURAV MEHRA Head of Sales - India 15+ years of experience in sales and business development</p>	<p>WENDIKA SAGITA EV Sales and Administration 10+ years of experience in EV sales and administration</p>	<p>PRASHANT KATKE Head - Program Management 20+ years of experience in program management</p>

Supplemented with 100+ Years of Automotive, Battery and Semiconductor Experience

<p>PROF. DR. WALTER COMMERELL Chief Engineering Advisor - Battery Professor of University of Applied Sciences in Germany</p>	<p>DR. THOMAS SCHWITZ Chief Engineering Advisor - Classic Professor at University of Applied Sciences in Germany</p>	<p>JURAJ HIREC Chief Software Advisor - Blockchain Assistant Professor at University of Applied Sciences in Germany</p>	<p>Vikas Choudhary Chief Software Advisor - Blockchain Assistant Professor at University of Applied Sciences in Germany</p>
---	---	--	--

Receiving Substantial Media and Community Attention

businessline
 Auto ignition in pact with Germany's Volektra for advanced EV powertrain systems

news
 The day, when the world's greatest...

Our 2023 Journey with Your Money

Disclaimer - Revenue Projections are Estimates based on order book and not Guaranteed till booked



