

Transforming metastatic cancer from a terminal prognosis to a manageable disease like diabetes

[PITCH VIDEO](#) [INVESTOR PANEL](#)



lifebridge10000.com Longwood FL

[Technology](#) [Science](#) [Healthcare](#) [Social Impact](#) [Tech](#)

[OVERVIEW](#) [UPDATES](#) [WHAT PEOPLE SAY](#) [ASK A QUESTION](#)

Highlights

- 1 Our device can extend the proven benefits of Tumor Treating Fields (TTF) therapy to patients with metastatic cancer
- 2 On any given day 500,000+ cancer patients could be helped by our therapy. Without it they will die
- 3 Value creation! Tumor Treating Fields has experienced explosive growth up 736% since 2018 (Forbes)
- 4 We solve the limitations of the current therapy. 2 U.S. Patents 3rd pending. Pending in 36 countries

Our Team



Peter F Travers CEO and Founder, Managing Member of LifeBridge

He has a BA in communication from UCF. His first company was a medical ed firm that sold materials he created. He designed a marketing program that sold the training products to 3,000 hospitals.



Lee Zehngebot M.D. Medical Advisor

Dr. Lee Zehngebot has served as the Director of Clinical Research, Florida Hospital Cancer Institute in Orlando since 2007 and has participated as Principal Investigator and Co-Investigator on numerous clinical studies. Medical advisor to the company



Ken Watkins Founding Member and Chief Technologist

Mr. Watkins has 40 years of experience in the electronic engineering field, including 17 with Northrop Grumman Corp. While at Northrup he was responsible for 30 electrical engineers.

[SEE MORE](#)

Pitch



Company Purpose



LifeBridge can transform metastatic cancer from a terminal condition into a manageable chronic disease like diabetes via our patented ATTf system

LIFEBRIDGE 10000

"Because they have more life to live..."

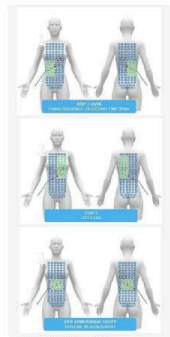
GLOBAL METASTATIC CANCER

Problem



- 90% of all cancer deaths are from metastatic disease.
- All forms of therapies fail these patients including chemo, radiation and surgery.
- Deaths are often excruciating.
- Patients and their doctors are desperately seeking high quality extended life

LIFEBRIDGE 10000



LIFEBRIDGE 10000

Solution

Adaptive Tumor Treating Fields (ATTf) by LifeBridge 10000

- ✓ No side effects- patients work, free to live life
- ✓ Core therapy successfully tested on 18 tumor types (can treat millions of patients)
- ✓ Patent protected improvements revolutionizes present TTF therapy
- ✓ We offer the only TTF therapy designed for the metastatic patient
- ✓ Uniquely addresses cancer patients who continue to remain underserved, yet account for 90% of all cancer deaths

Why Now?

LIFEBRIDGE 10000

LifeBridge Fast Follower Strategy

- Exclusive, irrevocable license to all ATTf patents, 17+ years left
- Leverages TTF Established Credibility
- Proven Go-To Market
- Metastatic = Blue Ocean Opportunity
- Huge Demand by people running out of options – literally life or death
- Low Price Elasticity

NOVOCURE IS OUR ONLY TTF COMPETITOR
\$500M SPENT BUILDING THE TTF MARKET
KEY PATENTS EXPIRING BY 2025



NOVOCURE

(Market Cap)

4/2016 \$1.2B

4/2021 \$13.5B

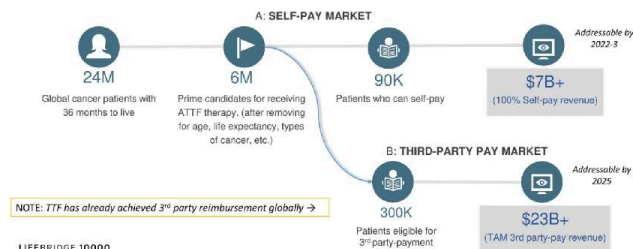


- Novocure has secured 3rd party payment globally for TTF
- Formally shown interest in LifeBridge
- Doesn't have a solution for diffuse metastatic disease

LIFEBRIDGE 10000

Market Size

TOTAL ADDRESSABLE MARKET (TAM): GLOBAL METASTATIC CANCER



LIFEBRIDGE 10000

Competition for LifeBridges ATTf Therapy

COMPETITIVE THERAPIES USED TO TREAT METASTATIC DISEASE

- **Radiation:** The more advanced the disease the more radiation is used to minimize suffering not for prolonging life – (Nausea, vomiting, extreme tiredness, etc.)
- **Chemo Therapies:** can be used on metastatic disease until the end, but all eventually fail (overall poor quality of life, nausea, vomiting, fatigue, can cause nerve damage, hair loss, may cause cognitive dysfunction, etc.)
- **Surgery:** Not a primary therapy for metastatic disease
- **Immune Therapy:** Experimental (Fatigue, diarrhea, fever, nausea, inflammation of the lungs, etc.)
- **All of the Above:** Quality of life endured is so poor metastatic patients ask themselves "Is it worth it"
- **Novocure Fixed Tumor Treating Fields:** Unable to treat metastatic disease in two or more locations (which is most metastatic cancer patients...)
- However TTF has no significant side effects other than minor skin irritation...

ALL THESE FAIL THE METASTATIC PATIENT... SO MILLIONS OF PATIENTS DIE...
→ **LIFEBRIDGE IS BUILT FROM THE GROUND UP TO TREAT THEM!**

LIFEBRIDGE 10000

Competition Continued

Only 2 companies control TTF patents: Novocure & LifeBridge 10000

Novocure's 16 blocking patents are aging/expiring rapidly

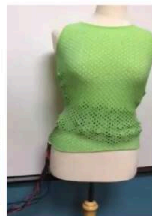
Source: Google Patents

Anticipated Expiration Year	2021	2022	2023	2024	Total expired by 06/18/2024
Number of Novocure Patents Expiring	2	5	3	6	16

Once these patents expire, LifeBridge will have freedom to operate in US
All LifeBridge Controlled Patents Have 17 to 20 Years Remaining!

Product

LIFEBRIDGE LB10000 SYSTEM



Key Milestone Achievements:

- Human wearable production device completed
- 2 core US patents issued
- Issued patents in: Japan, Australia, Chile, China, and Luxembourg
- Additional patents pending globally
- All IP is company owned

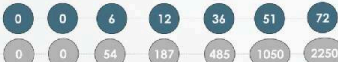
- ✓ FDA pre-sub meeting resulting in the acceptance of our innovative and low-risk clinical trial strategy
- ✓ FDA granted our pilot study a "Basket Trial" status: saving us millions of \$, simplifying trial recruitment, shaving years off our pipeline vs one cancer at a time.

Revolutionary PERSONALIZED Targeted Therapy!

REVENUE PLAN (\$M)

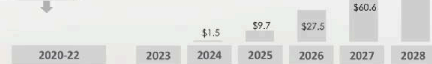
medical tourism

oncologists



\$40M Capital infusion at present valuation

Additional Capital infusion at multiple of present valuation due to Successful Pilot Study

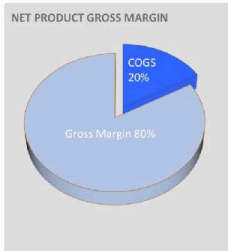


The above represent forward looking statements and cannot be guaranteed

GROSS MARGIN

- Each LifeBridge ATTF system (LB10000) has a commercial life of 12 patient-months.
- Average Net Gross Margin = 80% at early production levels.
- This is in line with industry comps.

Gross margin will increase with growth in production rates, regular product cost reductions and wider third-party reimbursement coverage



Team Continued

LIFEBRIDGE 10000 ADVISORY BOARD AND ADVISORS



Dianna Latour
Operating Partner
for LFE Capital



Scott Hubbard
Business
Development
Manager at Strategis
Consulting, LLC



Avi Roop
Chairman of the
Board and CEO of
Miret Surgical Inc

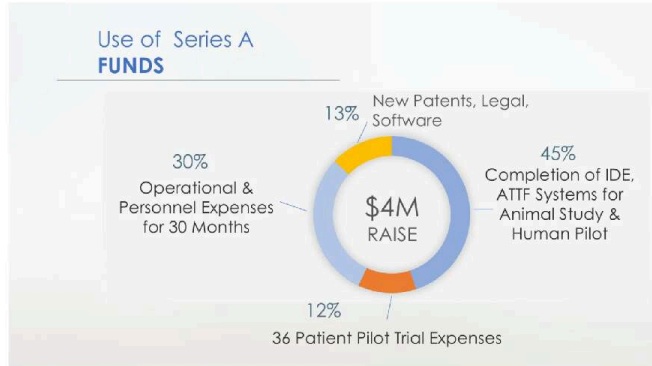


Mike Winegar
Winegar Consulting
Regulatory Affairs Strategy

Our team has put over 60 Devices through the FDA Approval Process

LIFEBRIDGE 10000

22



We are only raising up to \$250k in this Wefunder offering. See accompanying Form C for our use of proceeds.

The Opportunity

- Tumor Treating Fields are prescribed and reimbursed globally
- Effective against 18+ types of cancer (clinical and pre-clinical studies)
- Novocure currently the only TTF provider (over \$463M revenue from single cancer)
 - Key patents expiring by 2025
 - Metastatic disease not addressed in their 10 year pipeline
- Metastatic disease kills 90% of cancer patients, not primary tumors
 - Yet only 5% - 7% of R&D spend on Metastatic treatments
- LifeBridge's patented system designed from the ground up to treat metastatic disease
- Successful \$1.2M seed round closed, \$4.0M A round opened
- This will fund animal safety study, human pilot & all operations for 24 months

LifeBridge uniquely positioned to address \$23B underserved metastatic patient population with its patented Adaptive Tumor Treating Field (ATTF) system!